

# Re- imagine

LUAN GALLERY





## Introduction

Luan Gallery is excited to present *Re-imagine* featuring the lens-based work of Breda Burns, Martina Cleary and Jo Kimmins.

*Re-imagine* comprises audio-visual installation, real world objects along with photography in a variety of formats. By weaving together these different media the exhibition seeks to engage the viewer and stimulate them to reflect on the real world, the imagined world and the spaces in between.

With her site-specific work, *Counterflow*, Burns brings the waves of the west coast to the River gallery. By dividing an image of an ocean wave into vertical strips on semi-opaque vinyl and placing these on the windows overlooking the River Shannon, a layered work emerges that sets up a back and forth exchange between the dynamic sea and the flowing River Shannon behind it. Exhibited opposite the windows are a set of vertical panoramic photographs which explore the boundaries and the spaces between sea, sky and land. *Why Here*, takes the format of an audio work capturing recordings of people talking about their relationship with the ocean and intermingling with sounds of the sea itself.

Martina Cleary's work, *Ritual Dream of the Shaman* visualises the re-enactment of an ancient Celtic shamanic ritual, performed by experimental archaeologist and musician Billy Mag Fhloinn. The dream journey transforms the New gallery space into an immersive experience. Her work is a collaborative dynamic between the art of visual storytelling and the technology that makes it possible. Using projection mapping (a process that allows digital projection of images onto a non-flat surface) new creative possibilities are found.

Jo Kimmin's work, *Cetacean* is a selection of work from her MA final project in Photojournalism and Documentary Photography at London College of Communication. The large-scale photographs document the decomposition of a stranded whale over a five-month period. Focusing on the decaying flesh and blubber rather than the totality of the whale, the resulting images are lyrical and abstract, the ever-changing remains reminiscent of photographs of distant galaxies and strange planetary landscapes.

Each of the artists has a particular and unique artistic vocabulary, they are brought together in this exhibition and we the audience are invited to *Re-imagine*

the world around us and enjoy the new perspectives and interesting visual stories which emerge as we spend time observing and understanding the work, ourselves and our interaction with places and people.

On behalf of the Luan Gallery team, I congratulate the artists on their achievements and express our gratitude to Ángel Luis González Fernández, Founder and CEO of PhotoIreland Foundation for agreeing to officially launch the exhibition.

Simon Daly  
Assistant Manager  
Luan Gallery, Athlone Arts & Tourism



## Re-imagine

*Re-imagine* brings together works by three contemporary visual artists; Breda Burns, Martina Cleary and Jo Kimmins, which collectively form an inquiry into different aspects of our perception and understanding of reality. Their works propose us to consider the processes through which we construct culture, and how we are subsequently shaped by culture itself thereafter. Delving between the mythical and the analytical, we are invited to enjoy three revisions of natural, human, and spiritual realms, helping us to reflect on much broader and urgent issues.

Responding to the unique gallery space where it is presented, Breda Burns' large scale installation *Counterflow* playfully presents the river we once let go to become the sea. As we witness this remarkable space-bending wizardry, we are able to contemplate Breda's seascapes, collected over the years from her immediate surroundings, not only as we visit the gallery but more intriguingly from afar, from across the river and beyond. The Shannon itself becomes the backdrop to the installation, with its reflection actively participant. While we examine and reflect, we hear sounds of human interaction with the sea in Breda's accompanying audio work.

A different cycle of life is touched upon in Jo Kimmin's *Cetacean*, where detailed observations go beyond the mere abstract form on display, in search of that which is sublime. The exhibition title indicates that we are abandoning preconception and embarking instead, upon a mythical journey of contemplation. In the decaying whale, Jo has found her world in a grain of sand, and we are summoned to participate. Perhaps in doing so, applying such careful attention to all that surrounds us, will deepen our respect for ourselves, others, and nature, fully recognising our oneness with each other and with the universe.

As a response to our underlying disconnection with nature there is continuous media discussion which is becoming increasingly more urgent. This often enshrines the public figures who pose crucial questions to us all; there is a need to redirect our attention, to reaffirm certain pagan beliefs, to explore beyond our materialist mindset and we need the powerful influence from these leaders to act. In this way, Martina Cleary conjures in *Ritual Dream of the Shaman* an

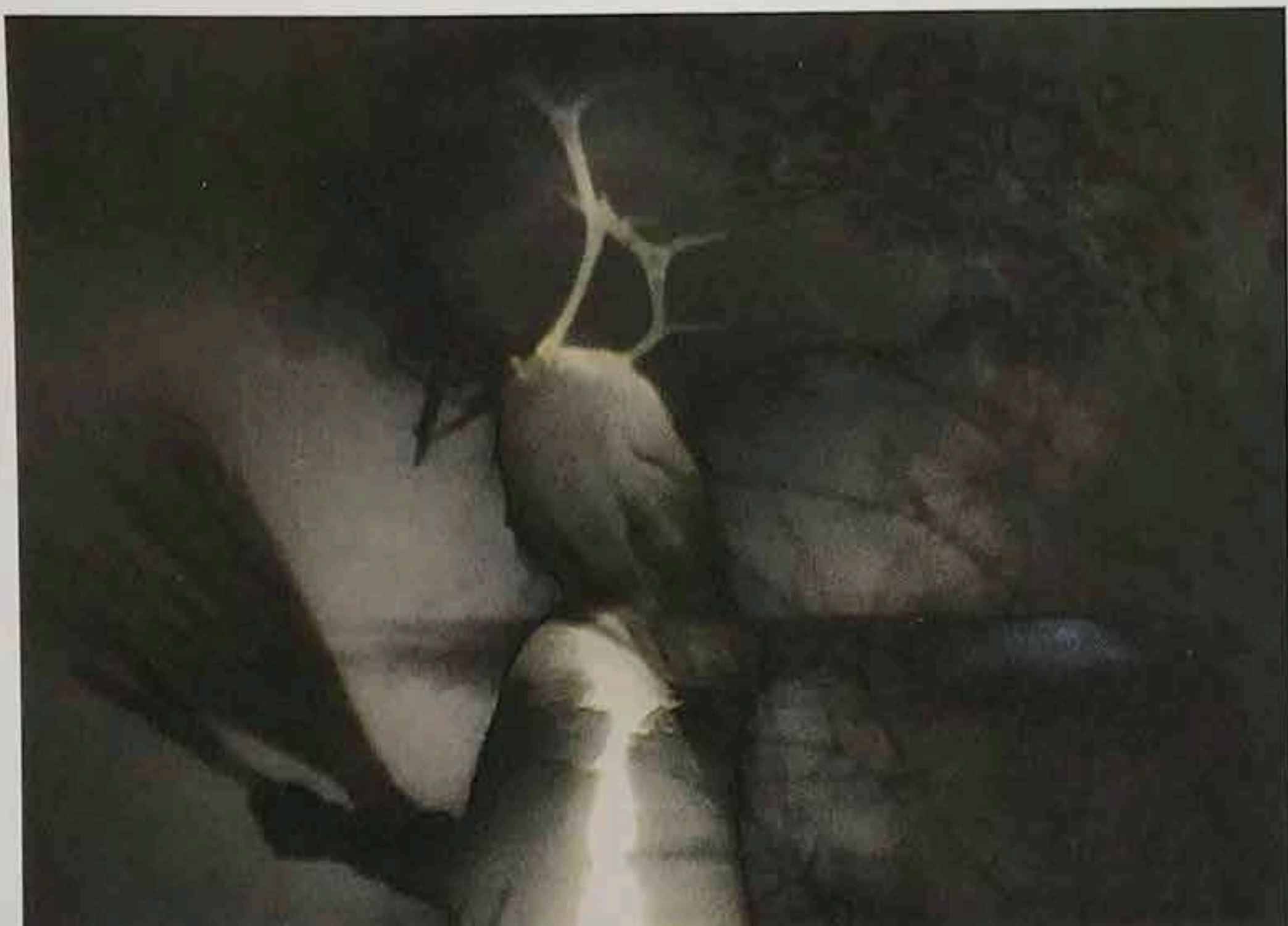


ancient Celtic shamanic ritual which through a series of historically researched actions, provides a myth with the potential to reconnect us to the natural world. This work was produced in collaboration with contemporary dance artist Isabella Oberlander as *Elen of the Thresholds* and Billy Mag Fhloinn, who appears as the *Shaman* and who is also responsible for the original soundtrack.

It is imperative that mankind reconsider some of the core ideas it has subscribed to over the last century and I believe these works by Breda Burns, Martina Cleary, and Jo Kimmins, which together form *Re-imagine* at Luan Gallery, grant us the opportunity and the context to reflect on the issues at hand, to consider our individual roles in reinterpreting our understanding of what nature is and our place within it.

Ángel Luis González Fernández  
Founder and CEO of PhotoIreland Foundation





*Ritual Dream of the Shaman*  
Video installation  
2019



*Ritual Dream of the Shaman*  
Video installation  
2019



## Martina Cleary

Martina Cleary is a lens-based media artist based in the West of Ireland. She began her studies at NCAD Dublin and Crawford College of Art and Design Cork, followed by postgraduate studies at The Finnish Academy of Fine Art and The Aalto University School of Art, Design and Architecture in Helsinki.

Martina has exhibited nationally and internationally since the mid 1990's, with support from The Arts Councils of Ireland and Finland, The Finnish Cultural Foundation, Clare County Arts Office and a number of other organisations in both Ireland and abroad. Recently her work has been shown in: Cité Internationale Des Universitaire de Paris (2017); The Courthouse Gallery Ennistymon, and Glór Ennis (2016); *Format* (2015) Derby; The Athen's Photo Festival (2015); *Just Another Photo Festival* (2015) New Delhi; *Obscura Festival* (2015) Malaysia; *Tbilisi Photo Festival* (2015); Avenue C-Studio New York (2015) and the *Impressions Fine Art Expo* (2015) Galway. In (2015) she was also a selected artist for the Procurate pan- European *Flaneur New Urban Narratives* project, as Artist in Residence in Lisbon.

Along with her work as an artist, in recent years Martina has also worked as a lecturer and visiting artist for a number of institutes and organisations including, The EU Urban Development Project and Metropolia University of Applied Sciences in Helsinki, BCA, GMIT and LSAD in Ireland, Cardiff School of Art & Design in the UK, and Moore College of Art and Design Philadelphia. Martina currently lectures in Photography, Film & Video at Limerick School of Art & Design, and completed a Practice-Based PhD at The European Centre of Photographic Research e(CPR) Newport, Wales in September (2017).



***Ritual Dream of the Shaman***

Video installation

2019